

NEWSLETTER

June 2026



SUNSHINE COAST
**LOCAL MEDICAL
ASSOCIATION**

SCLMA.COM.AU

CONTACTS

President	Dr Jon Harper
Vice President and Meetings Convenor	Dr Alex Matthews
SCLMA Patron	Dr Ian Colledge
SCLMA Life Members	Dr Wyn Lewis Dr Wayne Herdy Dr Di Minuskin Dr Mark De Wet Dr Ted Weaver Dr Mason Stevenson Dr Robert Vickers
Secretary	Dr John Evans
Treasurer	Dr James Williams
Newsletter Editor	Dr Steven Lawrie
Committee	Dr James Tungal Dr Bradley Wong Dr Jonathan Last Dr Roger Faint Dr Wayne Herdy Dr Thomas Kan Dr Emily Heaney
Representative for Griffith University Medical School	Dr Bryan Palmer
SCHHA GPLOs	Dr Michelle Johnston Dr Edwin Kruids
PHN Representative	Dr Amy Langford-Ely
SC Junior Docs Rep	Phoebe Hegerty



The Sunshine Coast Local Medical Association acknowledges the Traditional Custodians of the land, the Kabi Kabi and Jinibara peoples, and pays respect to Elders past and present. We recognise their ongoing connection to land, waters, and community.



For general enquiries, editorial or advertising contributions and costs, please email: admin@sclma.com.au

Contributions are welcome from members, especially 'Letters to the Editor.' Please address all correspondence to **Dr Steven Lawrie** admin@sclma.com.au

Disclaimer: The views expressed by the authors or articles in the newsletter of the Sunshine Coast Local Medical Association Inc. are not necessarily those of the Sunshine Coast Local Medical Association Inc. The Sunshine Coast Local Medical Association Inc. accepts no responsibility for errors, omissions or inaccuracies contained therein or for the consequences of any action taken by any person as a result of anything contained in this publication.



President's Message

Dr Jon Harper

Like Ritalin for university students, artificial intelligence is rapidly becoming the succour we never knew we needed.

I recently spoke with a couple of colleagues who were both using AI to generate clinical notes from patient consultations. One was just starting out with AI, the other had been an early adopter. Both were in awe of the ability of the AI assistant to discern the important medical details from the consultation and create a coherent letter or clinical entry.

The doctor who had been using AI for several months, however, was beginning to become aware of their deskilling in summarising clinical problems and solutions into meaningful text. But this was countered by enhancements in their eye contact and body language in the consultation.

Before computers, doctors documented consultations with handwritten notes which were often remarkably brief. Letters were dictated and typed (by someone else). When I was a medical student, I got a job working for a general practice going through stacks

of paper medical records to create Summary Cards. These summary cards were placed in the front of each patient's Lloyd George envelope for quick reference. I would read through years of consultations and try to identify significant diagnoses.

It all made for fascinating reading; the brevity of the entries was astonishing. Acronyms, some well-known some seemingly random, were in almost every line. There was a palpable contempt from the authors that they had to write anything at all. Doctors then, as now, were interested in making a diagnosis and treating it, not writing about it.

So perhaps AI medical transcription is the end of that uneasy period in medicine's history when doctors had to pay as much attention to their medical records as they did to the patient in front of them. Perhaps, we could use AI to allow us to enhance the human aspects of the consultation - eye-contact, physical touch, and empathy.

Dr Jon Harper
President

The Radiology Clinic presents



SUNSHINE COAST
**LOCAL MEDICAL
ASSOCIATION**

Gala Celebration

CHARITY RECIPIENT - GATEWAY CARE

Since 2003, Gateway Care has supported over 40,000 families through connection, food collection, and care for people and the environment.

Date: Saturday, 1 August 2026
Time: 6.00pm - 10.00pm
Venue: Altitude Nine, Maroochydore

Scan QR code
to book tickets



trybooking.com/events

TICKETS

- **Early Bird: \$140 (available until 30 June)**
- **Standard: \$170**

Join us for an elegant evening of canapés, fine wine and beer, complemented by ambient live vocals, comedy, a roaming magician, live caricatures, and a photo booth, all in support of local families in need. We are proud to be fundraising for Gateway Care — a vital food rescue organisation distributing food to those in need across the Sunshine Coast. Your attendance directly supports the incredible work they do within our community.

Event enquiries: admin@sclma.com.au


theradiologyclinic



NEED HELP WITH THE COST OF GROCERIES? EVERYONE IS WELCOME



SAVE UP TO
60% ON
GROCERIES

SIGN UP IN STORE TODAY!



WHAT IS GATEWAY CARE

Gateway Care is a low-cost food centre.

We help families save on groceries every week. Serving the Sunshine Coast for 15+ years. Everyone is welcome.

 Follow us on Social Media @gatewaycare



OPENING HOURS

M - F 8am - 3pm
Sat 8am-12pm
Sun CLOSED



LOCATION

11 HELEN ST,
CALOUNDRA WEST,
4551



WELCOME

to our new members!

One of the greatest strengths of the Sunshine Coast Local Medical Association (SCLMA) is the diversity, talent and collegiality of its members. With each new member who joins, our network grows stronger – creating more opportunities to learn from one another, support each other, and collectively advance health care in our region.

In this issue, we are pleased to welcome the following new members below, to the SCLMA. We look forward to seeing you at upcoming meetings, events and social gatherings, and to the contributions you'll bring to our professional community.

- **Poshitha De Silva**

Membership in the SCLMA offers a range of benefits, including:

- Regular educational meetings with high-quality clinical updates and guest speakers
- Members only access to podcasts of monthly meeting presentations
- Gala dinner and/or other events
- Opportunities for collegial networking and collaboration across specialties
- Advocacy on local medical issues and representation of members' interests
- Access to our newsletter and communication channels for keeping up-to-date with medical news and events
- A strong professional and social support network within the Sunshine Coast medical community

If you know of colleagues who are new to the area, recently commenced practice, or who might benefit from joining, please encourage them to connect with us. The more voices and perspectives we bring together, the more vibrant and effective our Association becomes.

We warmly welcome our new members and look forward to building an even stronger medical community together!



SUNSHINE COAST
RADIOLOGY

Same Day
& Next Day
Appointments
Available

New 3T MRI at Noosa

Advanced imaging has become more accessible for your Sunshine Coast patients, with our 5th MRI unit now operational at our Noosa site.

Why Refer to Us?

- ✓ Greater access and shorter wait times for patients
- ✓ Clinically tailored imaging acquisition
- ✓ Rapid, detailed reports by sub-specialist radiologists
- ✓ State-of-the-art technology gives:
 - sharper images
 - shorter scan times
 - wide design for patient comfort
- ✓ Selected sites offer after hours and weekend appointments

Noosa Civic | Maroochydore (Baden Powell St & Wises Rd) | SCUPH | Caloundra

Refer your patients to Sunshine Coast Radiology today for rapid access and detailed results.

Need anything else? Contact your Referrer Relationship Specialist:
Tremain Permewan | 0418 289 686 | tremain@scradiology.com.au
Bernie Rushton | 0477 444 230 | brushton@scradiology.com.au

Bookings: 1 300 697 226 | scradiology.com.au

Excellence in Diagnostics

SUN 485128 SCLMA Digital Advert A4

Dr Natalie Shaddock

Your partner in care



ATHENA O&G

OBSTETRICS GYNAECOLOGY FERTILITY

Specialist Women's Health Care for Women by Women

Hello I'm Dr Natalie Shaddock

FRANZCOG | Obstetrician & Gynaecologist • Fertility & IVF

I'm dedicated to ensuring your patients receive the highest quality care. Here's how...

Personally Triaged Referrals

Every referral is reviewed directly by Dr Shaddock, ensuring urgent and complex cases are prioritised appropriately.

Streamlined Communication

Prompt correspondence via Medical Objects, keeping you informed at every stage of care.

Advanced Laparoscopic Surgery

Skilled in minimally invasive gynaecological procedures, reducing recovery times and improving patient outcomes.

Endometriosis Expertise

Special interest and ongoing upskilling in the management of endometriosis and chronic pelvic pain, ensuring evidence-based, contemporary care for complex cases.

Comprehensive Scope

Obstetrics, gynaecology, and fertility services in one practice for seamless continuity.

Accessible & Responsive

Sunshine Coast location with short wait times and flexible scheduling.

Collaborative Care

Strong focus on working with GPs to support ongoing patient management.

P (07) 5406 7030 F (07) 5406 7031 W athenaog.com.au

A Suite 3, 23 Elsa Wilson Drive, Buderim, Qld, 4556.

E referrals@athenaog.com.au

ABN 77 689 590 485 © 2025 Athena O&G Pty Ltd. All rights reserved.



GP Liaison

Your hospital connection, together
we can deliver better healthcare.

Dr Edwin Krays and Dr Michelle Johnston



New: Surgical operation notes now visible in the Viewer

The Viewer (Health Provider Portal) now automatically displays a full copy of the surgical operation note in the 'Procedures' tab. If the patient had multiple procedures documented in the one operation note, the title will show the first procedure and others will be listed.

Coming soon: electronic delivery of hospital image reports to GPs

From the end of June 2026 Sunshine Coast HHS will enhance its electronic delivery processes so that, once imaging reports are verified, they are sent more reliably and consistently via electronic channels (Secure Transfer Service) or fax. GPs will receive a copy of imaging reports requested in hospital outpatient clinics, day procedure units and emergency departments in the Sunshine Coast and Gympie, as well as imaging requested by GPs and other community providers.

These correspondences contain the written imaging report only and do not include image files. Imaging reports requested during inpatient admissions will not be routinely copied to the GP at this stage.

To help ensure reports are delivered correctly, please:

- Ensure your STS address is up to date and actively monitored, as this will be our primary communication channel for imaging reports.
- Confirm provider numbers are correct for all clinicians.
- Ensure practice contact details, including fax numbers where used, are accurate and up to date.

You can access the STS Address Book Update form via: [GP enquiries | Sunshine Coast Hospital and Health Service](#). When the form is complete, please save and email to STS_External-Alerts@health.qld.gov.au. You are always welcome to call the GP Liaison Office for further assistance: 5202 3822.

Syphilis is back

In 2025, Chief Medical Officer Professor Michael Kid declared syphilis "a Communicable Disease Incident of National significance." This is due to the doubling of cases in the last decade, affecting not just high-risk populations but also the heterosexual metropolitan population. Qld is of no exception (see image).

Syphilis notifications, Sunshine Coast HHS

YEAR	NUMBER
2022	38
2023	66
2024	87
2025	95

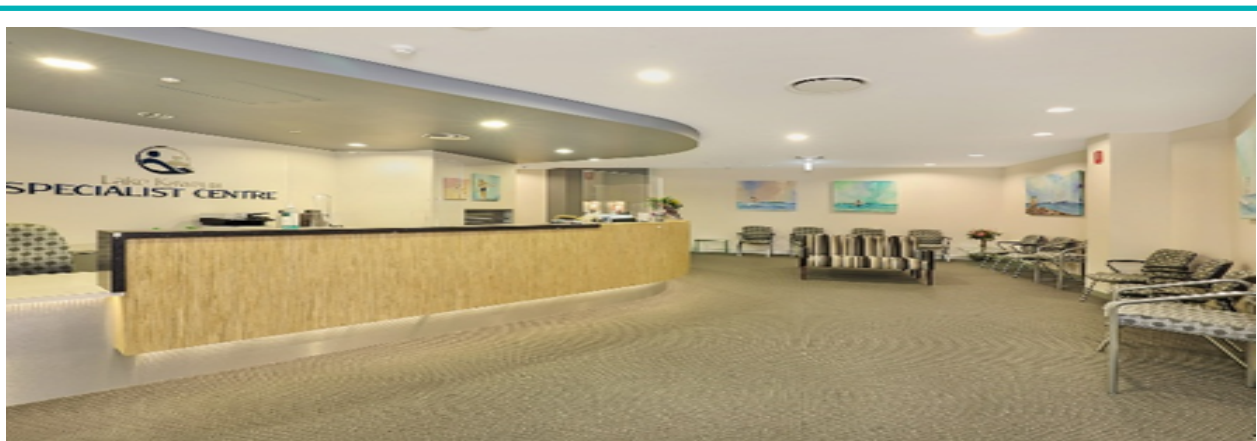
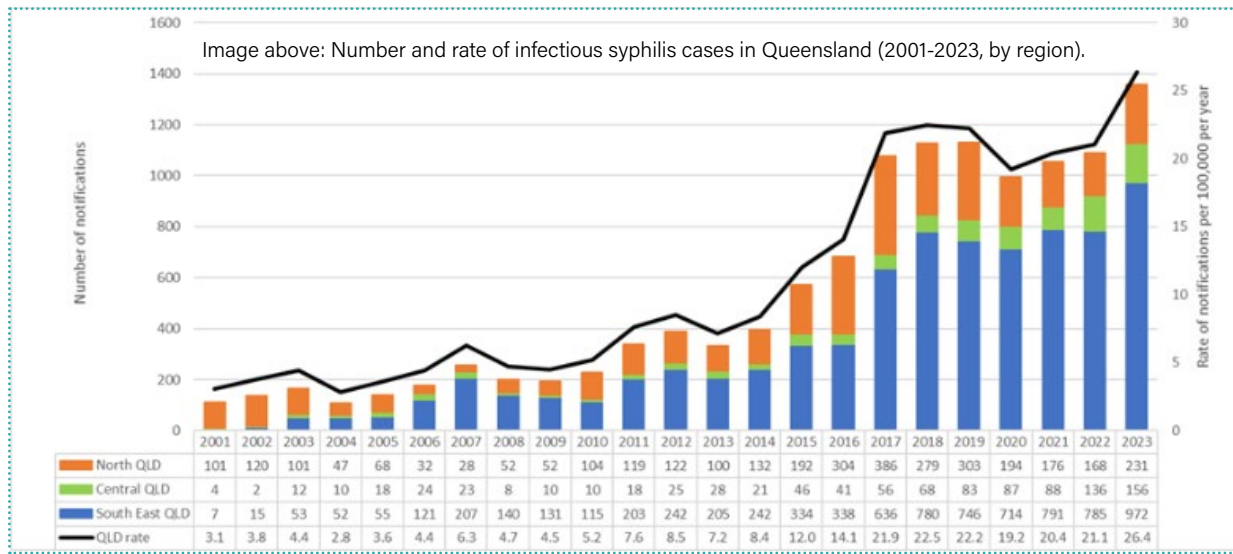


Key messages in preventing the spread of syphilis

- Normalise testing as routine
- Provide syphilis testing as part of the standard asymptomatic STI check up
- Emphasise the importance of early detection and prevention
- Adopt a proactive approach to testing
- Ensure conversations are culturally safe and sensitive
- Integrate testing to conversations into relevant clinical moments
- Reinforce that testing is quick, safe and beneficial
- Explain that all discussions are confidential

Interpreting syphilis serology and treatment decisions can be complicated, and the Sunshine Coast Sexual Health Service is happy to assist.

Assistance can be obtained from the Sunshine Coast Sexual Health Service, Ph 07 35425065. For more information, see HealthPathways or: Syphilis | Communicable disease control guidance



6B/5 Innovation Parkway, Birtinya | Medical Suite 162m²

Modern Medical Suite for Lease

Position your practice in the heart of the Sunshine Coast health precinct. Ground floor suite with a quality, ready-to-use fit-out.

Features

- 3 consulting rooms + treatment room
- Reception and waiting area
- Staff office, kitchen & amenities

Location

- Onsite Lake Kawana Hospital
- Near SCU Public & Private Hospitals

Parking

- Ample visitor parking
- 4 staff spaces

Available Now | Joint tenancy welcome

Janette Ritchie 0400 593 007 E janetteritchie@inet.net.au Lindy Waugh 0429 060 406 E lindysnwaugh@gmail.com



We've got you covered for women's health

When: Saturday 29 August 2026, 9am – 2pm

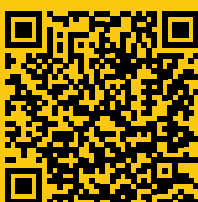
Where: Pier 33, Mooloolaba Marina

Join us for an interactive day of GP education focused on women's health, with 10 experienced Buderim Private Hospital specialists sharing insights to support your everyday practice. This high-quality educational event awards 5 hours of RACGP CPD.

Don't miss this opportunity to network and expand your knowledge across a range of women's health conditions including menopause, heavy menstrual bleeding, pelvic pain, pelvic organ prolapse, polycystic ovarian syndrome (PCOS) now known as polyendocrine metabolic ovarian syndrome (PMOS), infertility, endometriosis, breast cancer and more.

Featuring

- Dr Kirsten Morrow – Obstetrician, Gynaecologist & Menopause Specialist
- Dr Lisa Harris – Obstetrician, Gynaecologist & Fertility Specialist
- Dr Peta Higgs – Urogynaecologist
- Dr Saskia Olivier – General & Obstetric Physician
- Dr George Bogiatzis – Gynaecologist
- Dr Natalie Shaddock – Obstetrician & Gynaecologist
- Dr Amanda Wee – Obstetrician & Gynaecologist
- Dr Roderick McMurray – Breast, Endocrine & General Surgery
- Dr Anna Sandstrom – Breast Surgeon
- Dr Sophia Ly – Radiation Oncologist



To register, scan QR or [click here](#)

Apply to be part of our Cooinda Mental Health Service

Buderim Private Hospital's Cooinda Mental Health Service is one of Queensland's leading private mental health services, offering compassionate, evidencebased care in a purpose-built and supportive environment. We have exciting opportunities available to join the multidisciplinary team at Coodina Clinic in the following positions:

- Employed Intake Psychiatrist
- Consultant Psychiatrist

With a strong pathway into private practice, this could be your opportunity to contribute to highquality inpatient, outpatient and day program care, be part of a team that values collaboration, clinical excellence and holistic care, and build experience in a respected private mental health setting. For more information about this opportunity or to organise a confidential discussion regarding remuneration and other incentives, please contact Shane Mitchell using the details provided above.

High School Engagement Program

Recently we had the pleasure of welcoming over 40 local high school students to our bi-annual High School Engagement Program. Each year, we partner with CheckUP Australia and their Health Gateway to Industry Schools Program to inspire and educate the next generation of healthcare professionals.

Students from Siena Catholic College, St Columban's College, North Lakes State College and Coolum State High School joined us as we explored the wonderful world of healthcare, with hands-on experiences in birth suites, allied health, rehabilitation gym, and ICU training room. A highlight of the day was listening to a panel of healthcare professionals and university students, who shared their passion for their jobs, tips for getting into their courses and what a career in healthcare can offer.



Nickelle Morris
Partner & Gold Coast Leader,
Travis Schultz & Partners

MAIC's New Guidelines: Key Considerations for Health Professionals

If your patients are injured in a motor vehicle accident in Queensland, the CTP (Compulsory Third Party) process quickly becomes part of their healthcare journey. Many try to navigate their claim without legal representation and the Motor Accident Insurance Commission's (MAIC) new Guidelines aim to provide structure, but the reality is that self-represented claimants often rely heavily on their treating doctors for clarity, documentation, and support.

1. What self-represented patients are responsible for

When patients run their own claim, they must manage all legal and administrative requirements. This can often create stress and confusion that can spill into the treatment room.

Patients must:

- Submit their Notice of Accident Claim Form correctly
- Comply with treatment plans and disclosure obligations
- Attend insurer-arranged assessments
- Communicate honestly and promptly with insurers
- Provide all medical evidence, including reports and treatment summaries
- Negotiate their own settlement

As many aspects of the claim rely on medical evidence, the quality and clarity of their medical professional's documentation can significantly influence patients' entitlements and future treatment options.

2. Understanding the insurer's role (and limitations)

Doctors and allied health providers often find themselves caught between an insurer seeking information and a patient seeking reassurance.

Here's what insurers must do:

- Act reasonably
- Investigate the accident and injury
- Fund reasonable and appropriate rehabilitation
- Pay compensation if their insured driver is at fault

But insurers cannot:

- Provide legal advice
- Tell a patient the true value of their claim
- Help gather medical evidence
- Advocate for the patient's best interests

This distinction matters. Even when insurers appear helpful, they are not patients' advocates. That role falls back on the patient and their chosen healthcare and legal support team.

3. Patients can seek legal advice at any point

Many injured people begin their CTP claim alone. As their doctor or allied health provider, you could be the first person they turn to with questions the insurer can't answer. Patients are legally allowed to obtain legal advice at any stage of the process – even after lodging a claim or receiving an insurer's offer.

Early legal support also often improves a patient's access to appropriate rehabilitation services.

This can help ensure patients are not pressured into accepting low settlement offers, missing essential evidence or under-documenting their injuries. Keeping in mind that your role is not to give legal advice, but you can be there to remind patients that help is available early if they feel overwhelmed.

4. Key Stages Where Doctors Play a Critical Role

The MAIC Guidelines emphasise several decision points where medical input becomes central:

Early treatment approvals

Insurers fund treatment only when it is “reasonable and appropriate.” The strength of your clinical notes, including clear documentation of reported symptoms and clinical findings, plays a key role in determining what treatment is approved, how quickly it is authorized and whether ongoing therapy is supported.

Clear, objective, and detailed records are essential, especially for self-represented patients..

Stabilisation and settlement

When an injury has stabilised, medicolegal clarity becomes particularly important. As settlements are generally in full and final satisfaction of a claim, patients who settle before their injuries have stabilised and/or are properly documented, may permanently lose access to future treatment funding and compensation entitlements

In summary, by understanding the pressures self represented patients face and the critical points where medical input carries the most weight, doctors and allied health providers can help ensure decisions in relation to patient’s treatment, rehabilitation and care reflect their clinical needs and long term recovery.

2026 better OUTCOMES

Saturday, 8 August 2026
W Hotel | Brisbane

Collaborating across
disciplines to shape
better outcomes



Experience a medical conference like no other.

The 2026 Better Outcomes Conference is an invite-only, multidisciplinary medical conference dedicated to advancing patient-centred care through cross-specialty collaboration.

Bringing together 250+ medical specialists, allied health professionals and personal injury lawyers, the conference provides a unique forum for shared insight, improved coordination, and better patient outcomes.

Delegate places are limited. To register your interest or enquire about sponsorship, email liberty.moore@schultzlaw.com.au.



Cancer Care Noosa is the region's only comprehensive oncology centre and offers access to affordable cancer care services without a waitlist. Our multidisciplinary team of local oncology specialists offer personalised healthcare utilising advanced treatments and technologies, to ensure the best possible outcomes for patients.



Dr. Debra Furniss
Radiation Oncologist & Medical Director

Consults at: Noosa, Gympie, Buderim, Caboolture

Clinical interests in breast, GI, bone, brain, spine, lung and skin cancers, haematological malignancies, palliative radiotherapy and treatment for benign conditions



Dr Michelle Morris
Medical Oncologist

Consults at: Noosa, Gympie, Birtinya

Experienced in managing a wide range of solid tumour malignancies with clinical interests in breast cancer, melanoma, genealogical and urological malignancies



Dr Harry Gasper
Medical Oncologist

Consults at: Noosa, Birtinya

Experienced in treating a broad range of malignancies with an interest in GI, lung, skin, prostate and brain cancer.



Mr James Chapman
Nurse Practitioner/Lymphoedema

Consults at: Noosa

Accredited and experienced in the assessment of lymphoedema and lipoedema and offers affordable and patient centric treatment options

Cancer Care Noosa provides:

- Radiation oncology
- Medical oncology
- Oncology pharmacy
- Clinical trials and research
- Pathology
- Local specialists you know and trust
- Lymphoedema nurse practitioner clinic
- Specialist consulting
- Easy access and 150 car parks
- Affordable cancer care



Cancer Care Noosa
36-40 Hofmann Drive
Noosaville QLD 4566



07 5293 7200



admin@cancercarenoosa.com.au



Evaluating the Role of General Practitioners in the National Lung Cancer Screening Program



SHORT GP SURVEY

 We want to know how **you** are getting on.

Your feedback helps improve GP support and outcomes for patients.

ELIGIBILITY



Registered GP or GP trainee



Currently practicing in Australia



SCAN TO COMPLETE THE SURVEY



 OR CLICK THE LINK BELOW:

<https://bit.ly/4vKTct1>



For more information, please contact:
Dr. Elaine Halcrow
e.halcrow@griffith.edu.au



Approved by Griffith Ethics
Reference:
HREC/2026/0061



Your voice.
Your practice.
Better care for our patients.

Student-centred learning for patient-centred care

The Griffith MD has a central focus on generalism, primary care, public health, rural and First Peoples health. We are inviting GPs to partner with us as GP Supervisors to impart their knowledge, inspire our students to choose general practice as their profession, and build workforce capacity in this critical area of need.

GP Supervisors can apply for Academic titles. Academic Titleholders are valued affiliate members of the University and enjoy access to the University's library and information technology facilities.

Visit: griffith.edu.au/griffith-health/academic-titles

Additionally, most accredited general practices will be eligible for Teaching Practice Incentives Program through Services Australia.

Visit servicesaustralia.gov.au/teaching-payment-for-practice-incentives-program

Structure

1st and 2nd year students join a general practice team in a supported longitudinal program. 4th/final year students join a general practice team for a total of six weeks.

Students will also have opportunities for extended rural placements.

We value your expertise and ongoing support of medical education, a vital contribution to the maintenance and continuity of the medical workforce. We invite you to partner with us in training the next generation of health professionals.

To become a GP Supervisor, contact:

Associate Professor Bryan Palmer
Associate Professor in Primary Care and Academic Lead in General Practice, Sunshine Coast
School of Medicine and Dentistry
b.palmer@griffith.edu.au
(07) 5202 0333

Associate Professor Alyson Hee
Associate Professor in Primary Care and Academic Lead in General Practice, Gold Coast
School of Medicine and Dentistry
a.hee@griffith.edu.au
(07) 5678 0355

Associate Professor Robert Heffernan
Clinical Sub-Dean Rural
School of Medicine and Dentistry, Toowoomba
r.heffernan@ruralmeded.org.au
(07) 4638 7999





Train the next generation: become a GP Supervisor

Griffith University's Doctor of Medicine equips the next generation of doctors to meet the high expectations for patient-centred care. We're committed to producing competent, compassionate graduates ready to make a successful transition to professional practice.

Make it matter



Early detection saves lives. Trust your gut and get tested

This week, 280 Australians will be diagnosed with bowel cancer – Australia's second deadliest cancer. This June, for Bowel Cancer Awareness Month, we are encouraging all Australians not to delay important digestive health checks and screening.

Data from the Australian Cancer Atlas indicates that the coast's business centre, Maroochydore, has 19% more bowel cancer cases than the national average, while nearby Mooloolaba had 6% below the national average.

Caloundra at the southern end of the coast was 14% above average and Noosa in the north was 6% below. Moving just outside the coast, Gympie North had 25% more cases than the national average, but Gympie South had 14% fewer. Beachmere to Sandstone Point had a significant 49% more cases than average.

Gastroenterologist, Dr Tim Lyon from Colonoscopy Clinic Sunshine Coast, said the data told only part of the story, with more younger people now testing positive.

"The rate of detection in Australians aged under 50 has been steadily increasing over the last 10 years," he said.

As a result, the National Bowel Cancer Screening Program has been expanded, so that anyone aged

45-50 can register and request a kit in the mail. Australians aged over 50 are automatically sent a kit.

"The early onset of colorectal cancer is influenced by a range of factors, including diet and lifestyle," said Dr Lyon.

"I know there is an 'ick-factor' in the screening test. I know there is an 'ick-factor' in having a colonoscopy. But if it's caught early, colorectal cancer is very treatable.

"Polyps can take up to 10 years to turn into cancer, so early testing and removal can save lives."

Colonoscopy Clinic has now opened on the Sunshine Coast, offering high quality, affordable care. Services are performed at day surgeries and hospitals in Maroochydore, Caloundra, Buderim, Nambour and Noosa, with easy online registration, 24/7 support and transparent fees.

"We're on the Sunshine Coast because we have seen the need for an accessible, transparent and professional service," said Dr Lyon.

"If you have any concerns, please just take that first step, because if you have symptoms, or are in a high-risk category, the earlier you take action the better."

High-risk factors

- A family history of bowel cancer or polyps
- A sedentary lifestyle
- Obesity
- A diet high in processed or red meat
- Excessive alcohol intake
- Smoking

Symptoms which should be investigated

- Blood in your stool or rectal bleeding
- Unexplained changes in bowel habits (such as diarrhea or constipation)
- Persistent abdominal pain, cramping or bloating

- Unexplained weight loss
- Feeling that your bowel doesn't empty completely
- Ongoing fatigue or weakness

Bowel cancer facts

- 14,534 Australians are diagnosed each year
- 5,276 Australians die from bowel cancer each year (101/week)
- 11% of Australians are under 50 years old when diagnosed
- Bowel cancer affects men and women equally
- Bowel cancer is treatable when caught early



Dr Tim Lyon
Gastroenterologist

About Dr Tim Lyon

Dr Tim Lyon is a gastroenterologist on the Sunshine Coast, with 13 years of experience working in rural and regional hospitals across Queensland, including Kingaroy and Toowoomba.

Tim joined Colonoscopy Clinic in 2025 as part of his specialist training, bringing his experience in rural general surgery and endoscopy to the team on the Sunshine Coast. He is passionate about delivering high-quality, patient-centred care and has played a key role in developing national clinical care standards for colonoscopy in Australia.

About Colonoscopy Clinic Sunshine Coast

Colonoscopy Clinic provides Convenient, Affordable, Reliable, and Excellent access to endoscopy and colonoscopy procedures across five partner hospitals on the Sunshine Coast. We offer telehealth appointments for your convenience and deliver comprehensive follow up care including microbiome testing and dietary support through Integrated Gut Health.

We are known for our transparent and affordable pricing, with no gap fees for the gastroenterologist or anaesthetist, and offer hassle-free personalised care and rapid access to services to prevent and detect bowel cancer for all patients.



June is Bowel Cancer Awareness Month

**Early detection
saves lives.
Trust your gut and
get tested.**

Dr Tim Lyon



Dr Tim Lyon
MBBS, BSc, FRACP, FACRRM

T 07 3870 3799 | F 07 3177 9965

hello@colonoscopyclinic.com.au

colonoscopyclinic.com.au

SUNSHINE COAST

Buderim Private Hospital
Caloundra Private Day Hospital
Nambour Selangor Private Hospital
Noosa Private Hospital
Sunshine Coast Day Hospital



SCAN TO
LEARN MORE



Are you living with a cardiovascular condition?

If you are over 18 years of age and have been diagnosed with heart or vascular disease you may be eligible to take part in one of our research trials.

Participants wanted

The VasoActive Research team at UniSC is currently recruiting people with Cardiovascular Disease, Peripheral Artery Disease, or other vascular diseases to participate in research trials. We have a number of current studies that are testing new rehabilitation, telehealth, and medical interventions.

What is involved?

Interventions and treatments include:

- ✓ Supervised exercise programs
- ✓ Telehealth programs
- ✓ Medical interventions

Research studies typically involve assessments including:

- ✓ Walking tests
- ✓ Vascular function tests
- ✓ Health questionnaires

Participants will receive support to cover the costs of transport and parking for study visits.

More information

To learn more or to find out whether you are eligible, please call or email a member of the VasoActive Research team:

Email: vasoactive@usc.edu.au

Tel: +617 5456 5364

Scan the QR code to register your interest



All research trials conducted by the VasoActive Research team have full ethical approval.



Sunshine Coast Neurosurgery

Specialist practice of Dr Stephen Byrne

Working on the Sunshine Coast since 2017, Dr Byrne MBChB, MRCSEd, FRACS underwent his neurosurgical training in Melbourne, Adelaide and New Zealand before gaining his Fellowship of the Royal Australasian College of Surgeons.

In fact, Stephen is the only fellowship-trained spine surgeon on the coast endorsed by both the Australian Orthopaedic Association and the Neurosurgical Society of Australasia.

At Sunshine Coast Neurosurgery all patients receive personalised care using the latest techniques to deliver world-class healthcare. We offer advice on surgical and non-surgical strategies of care.

Please feel free to call Sunshine Coast Neurosurgery to discuss any neurosurgical issue and we look forward to helping your patients along the road to recovery.



List of services

Sunshine Coast Neurosurgery use their extensive experience to treat many common conditions such as:

- Cervical and lumbar degenerative conditions
- Brain tumours
- Spine tumours
- Pituitary tumours
- Chiari malformations
- Radiofrequency Ablations

Plus they have a specialist interest in minimally invasive brain and spine surgery.

P: 07 5437 7256

E: info@scneuro.com.au

W: scneurosurgery.com.au

Suite 104, Vitality Village,
5 Discovery Court Birtinya Qld 4575



Payday Super 1 July 2026

On 1 July 2026, employers will be required to pay the superannuation guarantee (SG) at the same time as salary and wages are paid, "payday", rather than the current quarterly payment. These changes represent one of the most significant reforms to the superannuation system and affect not only the timing of payments but also payroll processes, the need for accuracy, and the employer's cash flow.

In addition, the SG contributions must be received by the employee's superannuation fund within seven business days of payday. The Commissioner may allow additional time where prescribed exceptional circumstances occur, including natural disasters and outages of communications or technology services that are widespread.

How will this affect your payroll?

- Quarterly superannuation contributions will end
- Some businesses may face multiple compliance requirements each month, depending on their pay cycles
- Any errors, such as incorrect superannuation fund details or rejected payments, must be able to be identified and corrected quickly
- There is no extension of time when contributions are rejected

Qualifying Earnings – Superannuation Guarantee (Administration) Act 1992 (SGAA)

Under the SGAA, the employer's SG obligation will be calculated under the definition of "qualifying earnings". Qualifying earnings are an important concept in the payday super framework, as this is the amount of superannuation required to be contributed by the employer for the employee in order to avoid having an individual base SG shortfall for the employee. The phrase payment of

qualifying earnings to or for an employee by an employer means:

- A payment of qualifying earnings to the employee by or on behalf of the employer; or
- For arrangements involving sacrificed contributions, the reduction in the amount of qualifying earnings made in return for the sacrificed contribution

A person's qualifying earnings are defined under subsection 10A(1) SGAA:

- Ordinary times earnings (OTE) is an existing concept under the SGAA
- A commission payable to a person
- All payments for the performance of the person's duties as a member of the executive body of a body corporate
- All payments under a contract that are paid in respect of a person's labour under the contract
- All payments to the persons referred to in subsection 12(8), which include entertainers, artists, musicians, sports persons and others
- All remuneration of persons referred to in subsection 12(9) or (10), for example, public office holders, and
- Amounts of a person's qualifying earnings under a salary sacrifice arrangement

To the extent that an amount is covered by more than one of the paragraphs in subsection 10A(1), that amount is only counted once for the purpose of working out the amount of the person's qualifying earnings.

Other Changes

Other changes will come into effect from 1 July 2026 as a consequence of the move to Payday Super.

- The ATO's Small Business Superannuation Clearing House will close
- SuperStream enhancements will commence, supporting faster payments and clearer error messaging
- New tools, including member verification requests, will be available to help identify issues before contributions are made

Employer SG Contributions

In summary, an employer's SG contribution will only be satisfied if contributions are paid correctly and received by the employee's superannuation fund within the required timeframe. It is important to ensure that your payroll system can process data accurately and in a timely manner so that you can comply with these new requirements.

If you require accounting, wealth and advisory assistance, please contact our experienced accountants and advisors at Poole Group on 07 5437 9900 or poole@poolegroup.com.au

PG
POOLE GROUP
 ACCOUNTING | WEALTH | ADVISORY

**Busy People
 Need Help to
 Save Time ...**

We have the ultimate efficient practice to save you time - a ONE STOP SHOP for all of your accounting and finance needs ...

Proud to have been servicing the Sunshine Coast for 45 years!

- ➔ Accounting
- ➔ Business Planning
- ➔ Bookkeeping
- ➔ Insurance Services
- ➔ Loan Advice
- ➔ Wealth Advice and Financial Planning

Poole Group Wealth Pty Ltd (CAR 00130980) ABN 32 672 132 434 is a Corporate Authorised Representative of PGM Financial Services Pty Ltd (AFSL 384712 ABN 132 323 443). My Better Loans Pty Ltd is a credit representative (MFR003) of BLSA Pty Ltd (ACN 117 481 760) (Australian Credit Licence 391237).

☎ 07 5437 9900
 ✉ concierge@poolegroup.com.au
 🌐 www.poolegroup.com.au

An exciting new clinical research study for people with excess weight and knee osteoarthritis



CDH
RESEARCH
INSTITUTE

This clinical study is evaluating the effect of an investigational treatment a new medicine on weight and knee pain

NO OUT OF POCKET COSTS



You may be able to join the research study if you:

- Are over 18 years old
- Have knee osteoarthritis pain
- Have not been able to lose bodyweight on your own
- Have a BMI of 27 or more

(BMI =Body Mass Index)



Referrals can be made through medical objects to:
Dr. Hans Seltenreich at Coastal Digestive Health

www.cdhrefsearch.com.au Ph: 07 5408 0900



Injured shoulder and knee clinic every Tuesday

Make the right call...on a Monday for a guaranteed review on Tuesday with an experienced professional

Dr Bernard Tamba-Lebbie

Orthopaedic Surgeon
Ph: 07 5452 5844
FAX: 07 5315 5495

Email: sunshinecoastshoulders@gmail.com



Sunshine Coast
ORTHOPAEDIC CARE



SUNNY COAST ORTHOPAEDIC & FRACTURE CLINIC

Dr Navi Bali - Orthopaedic Surgeon

Hip • Knee • Foot & Ankle • Trauma

Dr Bali provides a comprehensive patient centred approach to orthopaedic elective and injury management on the Sunshine coast, with a strong focus on personalised treatment plans.



- ✓ Timely appointments with urgent care clinic slots
- ✓ Non operative treatment options (PRP, HA, RFA)
- ✓ Muscle sparing 3D modelled and robotic joint replacements
- ✓ Knee and ankle arthroscopy
- ✓ Foot and Ankle conditions with affiliated podiatry input
- ✓ Sports injury, ligament and fracture care including WorkCover



REFERRAL



WEBSITE

Sunshine Coast's First Dedicated Cancer Care Clinic — Experienced Care Since 1998



Compassionate cancer care delivered by trusted local doctors

Our centre is home to:

- Highly experienced team of Medical Oncologists & Clinical Haematologists
- Day infusion unit offering the latest cutting edge treatments (including chemotherapy, immunotherapy, targeted therapy, blood products, infusions and venesections)
- Accepting both private and self-insured patients
- Cold cap therapy to prevent/minimise hair loss caused by certain chemotherapy treatments
- Specialised Allied Health team
- McGrath Breast Care Nurse
- Partnering with University of the Sunshine Coast to offer international clinical trials.



Our Team



Dr Hong Shue

Medical Oncologist
MBBS (Monash), FRACP



Dr Brenton Seidl

Medical Oncologist
MBBS, BSc, FRACP



Dr Sorab Shavaksha

Clinical Haematologist
MBChB (Leeds), FRACP,
FRCPA (2013)



Dr Joshua Richmond

Clinical Haematologist
MBBS(Hons), FRACGP,
FRACP, FRCPA



Dr Alice Livings

Clinical Haematologist
BSc(Hons), MBBS(Hons),
FRACP, FRCPA



Dr Katie Trusewicz

Psychologist
B.A. (Psych.), Postgrad. Dip. App.
Psych., D. Hlth Psych., MAAPi



Samantha Clutton

Clinical Psychologist
MPsychClin, FCCLP



Sarah Bloomfield

Dietitian & Nutritionist
APD, APN



Jesse Goldfinch

Exercise Physiologist
BClinExSc, ESSAM, AEP



Tania Shaw

Massage Therapist
DipRM, CLT, OMT



Sunshine Coast

Haematology & Oncology Clinic

GP/Specialist Priority Line:

07 3054 0758

An alternative treatment for osteoarthritis

- ✗ No surgery or hospital stays
- ✓ Typically 6 treatments* over 2-3 weeks
- ✓ Around 80-90%+ of the cost is covered by Medicare



Could Low-Dose Radiation Therapy (LDRT) help your osteoarthritis patients?

As health care professionals, you often see patients living with chronic osteoarthritis (OA) pain who are no longer experiencing pain relief from conservative therapy, but for whom surgery is not yet indicated.¹ Low-dose radiotherapy (LDRT) has emerged as a non-invasive alternative for pain relief and functional improvement, particularly in patients unresponsive to conservative measures.¹

LDRT uses carefully controlled, low doses of radiation to help reduce inflammation in affected joints. It has been used in Europe for decades and is now emerging as a treatment option in Australia for selected patients with osteoarthritis.¹

What can your patients expect?

- Symptom relief: Some patients may experience a reduction in pain and improved mobility following treatment²⁻⁴
- Minimal acute side-effects: LDRT has been shown to have very minimal acute side effects¹⁻⁴

Patient suitability

- Age ≥ 50 years
- Confirmed diagnosis of osteoarthritis (Kellgren-Laurence (KL) scores 1-3)
- Upper and lower limbs
- Failure of conservative therapy $\geq 3/12$
- Contraindications: pregnancy, rheumatoid arthritis, active connective tissue disease

Treatment

A treatment course is typically six sessions over 2-3 weeks. Depending on outcomes, patients may require a second or third course of treatment.

Osteoarthritis affects around 8.3% of the Australian population⁵



Dr Bradley Wong
MBBS, FRANZCR
Radiation Oncologist



Dr Sophie Ly
MBBS, FRANZCR
Radiation Oncologist



GenesisCare, Buderim
10 King Street
Buderim QLD 4556
Tel: (07) 5374 8100

GenesisCare, Noosa
Noosa Medical and Professional Centre
90 Goodchap Street, Noosaville, QLD 4566
Tel: (07) 5377 2200



Disclaimer: *Evidence suggests that some patients may need a second or third course. †Depending on the individual's position within Medicare Safety Nets for Medicare eligible patients.

References: 1. Hoveidaei A, et al. *Cur Thera Res.* 2025;102: 100777. 2. Fazilat-Panah D, et al. *Int J Radiat Biol.* 2025;101(5):541-548. 3. Makarova M.V, et al. *Rheumatol.* 2023;3(4):7. 4. Koneru B.N, et al. *Int J Rad Onco Biol Phys.* 2025;123(2):352-360. 5. Australian Government. *Australian Institute of Health and Welfare: Chronic musculoskeletal conditions: Osteoarthritis.* Available from: <https://www.aihw.gov.au/reports/chronic-musculoskeletal-conditions/osteoarthritis> (accessed October 2025).

An innovative approach to hip and knee replacement

Dr Daevyd Rodda
Orthopaedic Surgeon

Dr. Daevyd Rodda is a highly experienced and innovative hip and knee replacement surgeon based on the Sunshine Coast. He leads a specialised, multi-disciplinary team and regularly trains Australian and International surgeons in advanced techniques including:

- Anterior, minimally invasive total hip replacement
- Patient specific and Robotic knee replacement
- Complex revision hip and knee replacement

Telehealth appointments available for regional patients.



Contact us today for patient referrals.
Phone: 07 5493 8038 | www.scorthogroup.com.au



SUNSHINECOAST
ORTHOPAEDIC GROUP



Helping the Sunshine Coast

Move Without Pain.®

To book call 1300 130 410
or visit daneverson.com.au



Maroochydore | Noosa | Nambour | Caloundra | Deception Bay | Taringa



Dr George Bogiatzis

Rooms available for subletting at:

Nucleus Medical Suites

Up to six half-day sessions available per week on a regular basis. Room fully serviced with access to treatment room. Secretarial support provided.

Phone: 5444 6400

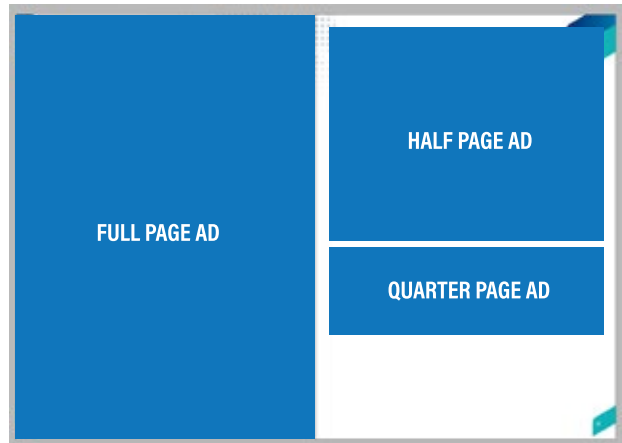
email: accounts@drgeorge.com.au

web: www.drgeorge.com.au

Suite 19, Level 2 Nucleus Medical Suites - 23 Elsa Wilson Drive, Buderim 4556

SCLMA Newsletter Advertising Kit 2026

- **Full page ad:** \$500 + GST
210mm x 297mm
- **Half page ad:** \$400 + GST
210mm x 148mm
- **Quarter page ad:** \$200 + GST
30mm x 95mm
- **Advertorials:** \$400 + GST



Please note the following discounts:

- 3 months - 10% discount
- 6 months - 17% discount
- 12 months - 30% discount

* Full payment is required prior, to be eligible for offer

CLASSIFIEDS

- All classifieds are subject to the Editor's discretion.
- No charge to current SCLMA members.
- Non-members: \$100.
- Word count no more than 120 words.
- The Sunshine Coast Local Medical Association's Newsletter is a monthly publication.
- All newsletters are uploaded to our website: sclma.com.au and our Facebook page, both attracting strong traffic.

- The newsletter has a electronic distribution to over 1,500 recipients in Sunshine Coast and areas of Qld and NSW, including specialists, GPs, hospital and retired doctors, doctors in training, allied health workers, practice managers, local councillors and politicians.
- The newsletter size varies between 20 and 40 pages. The cut-off date for advertisements and advertorials is the 1st of the month for that month's newsletter. The newsletter is distributed on the last week of each month.
- All content has to be approved by the Newsletter Editor.
- Please note that advertising guidelines apply. These are published in each newsletter.
- Contact: Lee-Anne Williams
admin@sclma.com.au

Pulse Oceanside 604 , furnished three consulting rooms with kitchenette, reception desk and waiting area is available for short term and long term lease . Suitable for private practicing doctor working at SCUH or SCUPH. Two car parking on site available .

Contact: 0419953466 .

Email Deepikabhat2003@yahoo.com



DISCLAIMER

- *While SCLMA will do all possible to ensure advertising material is reproduced as intended, the responsibility is firmly with the client / advertiser to supply advertising material according to our specifications.*

SCLMA Advertising Guidelines

To comply with Section 133 of the National Law and guidelines, advertising of services must not:

- Paragraph (a) "Create or be likely to create unwarranted and unrealistic expectations about the effectiveness of the health services advertised"
- Paragraph (f) "Claim that the services provided by a particular regulated health profession are better, as safe as or safer than others"
- Paragraph (o) "Contain any claim, statement or implication that a practitioner provides superior services to those provided by other registered health practitioners"

PLEASE NOTE THE FOLLOWING:

The anti discrimination commission of Queensland has the following statement on job advertising:

Discriminatory advertising is against the law. Job advertisements need to give the impression that all suitable applicants are welcome to apply.

References to sex, relationship status, age, race, religion etc should be avoided, as should the use of words that may indicate a preference for particular groups or may discourage others from applying, e. g. foreman, tradesman, glamorous, well-built, mature, youthful, office girl etc.

Publishers can be fined and be the subject of a complaint to the Commission for publishing discriminatory advertisements that show an intention to contravene the Anti-Discrimination Act 1991. Discriminatory advertisements will therefore often be refused or modified by publishers in order to avoid legal liability.



Nick Yim, Evan Jones and Philip Cumpston



Professor Shuichi Suetani

Photos: Clinical Meeting with Nick Yim, Evan Jones and Philip Cumpston, 28 May 2026

NEXT SCLMA CLINICAL MEETING

Thursday 25th June 2026

Venue: Maroochydore Surf Club Function Room

Address: 34-36 Alexandra Parade, Maroochydore QLD 4558

Thank you to our May sponsors:



P: 1800 988 522

W: cutcher.com.au

E: cnmail@cutcher.com.au

A: Suite 5, 36 Agnes Street, Fortitude Valley, Qld 4006



P: 07 3872 2222

W: amaq.com.au

E: amaq@amaq.com.au

A: 88 L'Estrange Terrace, Kelvin Grove QLD 4059

July 2026 NEWSLETTER

Content deadline:
Monday 1 July 2026

- Our circulation reaches more than 1,500 recipients!
- We welcome new content - case studies, local news and photos.
- Would you like to comment or suggest articles to be published?
- What would you like to see in the newsletter?
- If you are a new member, please send in a short bio and a photo to introduce yourself.
- Newsletters are posted to our website

Are you a member?

- If you are not a member please complete the application form available on the website:
- You will need two proposers to sign your
- application form. If this is a problem, come along to a monthly clinical meeting to introduce yourself.

sclma.com.au
admin@sclma.com.au



SUNSHINE COAST
**LOCAL MEDICAL
ASSOCIATION**